



GAT MONTHLY MEMBERSHIP PROGRESS REPORT

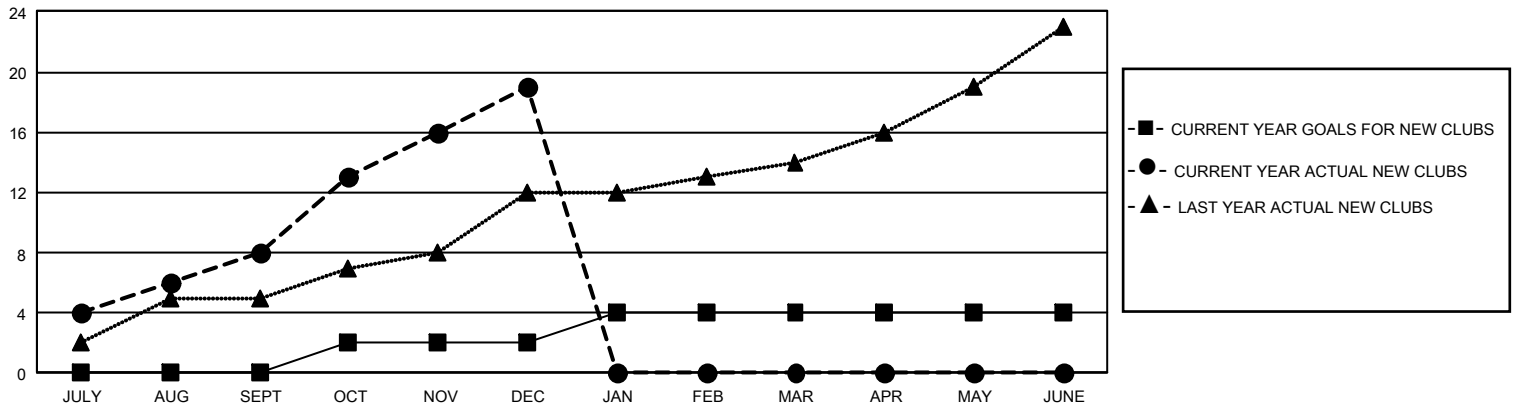
Results as of: 12/31/2025

GMT Constitutional Area 6 - S, Group B

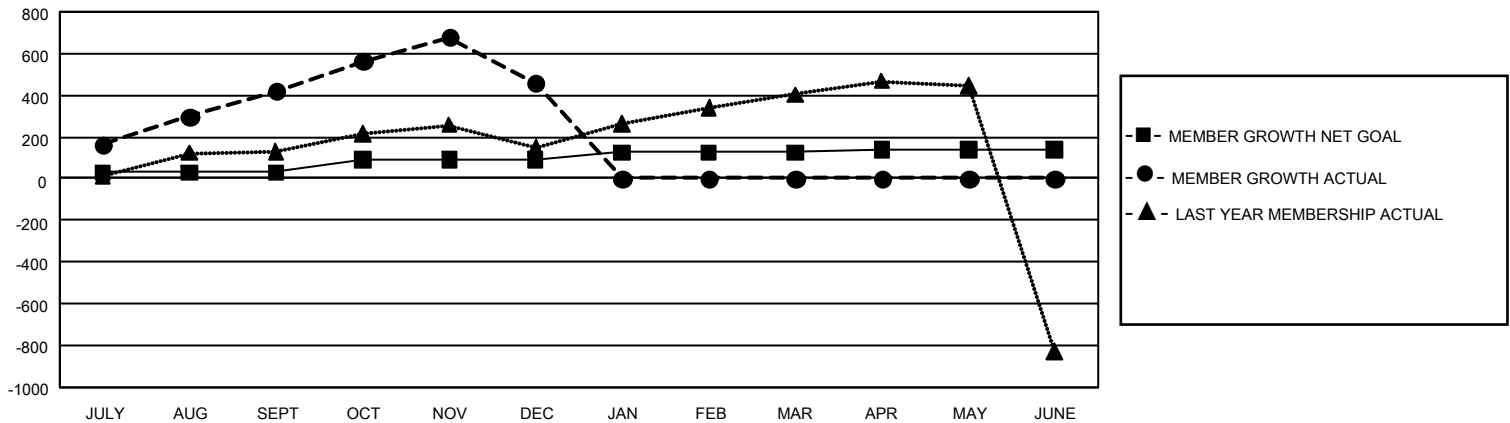
REPORT DOES NOT INCLUDE CLUBS IN UNDISTRICTED AREAS.

Clubs				Members			
RESULTS FOR 2025-2026				RESULTS FOR 2025-2026			
QUARTER	NEW CLUB GOAL	NEW CLUBS	DROPPED CLUBS	QUARTER	MEMBER GROWTH NET GOAL	MEMBER GROWTH ACTUAL	DROPPED MEMBERS ACTUAL (including transfers)
JULY/AUG/SEPT	0	8	3	JULY/AUG/SEPT	30	599	132
OCT/NOV/DEC	6	11	9	OCT/NOV/DEC	60	531	450
JAN/FEB/MAR	6	0	0	JAN/FEB/MAR	35	0	0
APR/MAY/JUNE	0	0	0	APR/MAY/JUNE	15	0	0

GOALS AND ACTUAL NEW CLUBS CUMULATIVE



GOALS AND ACTUAL MEMBERS CUMULATIVE



DROPPED CLUBS: 12

176 CLUBS OF 462 ADDED 1 OR MORE NEW MEMBERS

GENDER DISTRIBUTION

MALE 5,561 (70.48%)
FEMALE 2,329 (29.52%)
NON BINARY 0 (0.00%)
PREFER NOT TO ANSWER 0 (0.00%)

DROPPED MEMBERS

DECEASED 8
CLUB CANCELLED 148
OTHER 423
TOTAL 579

[CLICK HERE FOR CUMULATIVE MEMBERSHIP DATA](#)

TOTAL FAMILY UNIT MEMBERS 4,684

FAMILY MEMBERS PAYING HALF DUES 3,424